

ALL-NEW 06 MERCURY MILAN



MERCURY | NEW DOORS OPENED

A photograph of a white Mercury Milan sedan parked in front of a blue and white building. The car is shown from the rear, with 'MILAN' and 'V6' badges visible. The building has a decorative facade with blue panels and white columns. A large window with a diamond-patterned grid is visible. Two trees are on either side of the building. The sky is clear and blue.

ALL-NEW MERCURY MILAN | 2

Form. Function. Fashion.

INTRODUCING THE ALL-NEW MERCURY MILAN. Those who say “you can’t have it all” obviously haven’t cruised the highway of life (or the streets of the shopping district) in a 2006 Milan. Now they can. Once they stop ogling its sleek shape, or complimenting the beautiful details, invite them inside. Nestled in the roomy seats, surrounded by generous amenities, surprising versatility and high style, the storefronts pass by unnoticed. And since Milan offers a smooth and comfortable ride, they can sip their iced lattes without spilling a single delicious drop. Form and function follow fashion in the all-new Milan. Time to open new doors.

3 | MILAN: STYLE



MERCURY

mojo
FITNESS

mojo
FITNESS

mojo
FITNESS

YOGA
PILATES

PERSONAL
TRAINING



BLACK: MILAN PREMIER WITH AVAILABLE EQUIPMENT



Try a different flavor.

DO NEW EXPERIENCES KICK UP YOUR PULSE A NOTCH? THEN YOU'VE GOTTA TRY MILAN. ITS SLEEK LINES AND BOLD FEATURES ARE MADE FOR LIFE ON THE MOVE. (CLOCKWISE FROM UPPER LEFT) THE DISTINCTIVE MERCURY GRILLE GLOWS WITH A SATIN-ALUMINUM FINISH. AN AVAILABLE POWER MOONROOF SUPPLIES YOUR MINIMUM DAILY REQUIREMENT OF SKY. STANDARD LIGHT-EMITTING DIODE (LED) TAILLAMPS SIGNAL TECHNICAL PRECISION. STANDARD ON PREMIER, 17" MACHINED-ALUMINUM WHEELS DRAW APPRECIATIVE STARES. THESE SPICY TOUCHES ARE JUST THE FIRST COURSE, AS MILAN AWAKENS YOUR APPETITE FOR ADVENTURE.

5 | MILAN: STYLE



MERCURY



SILVER FROST METALLIC: MILAN V-6 PREMIER

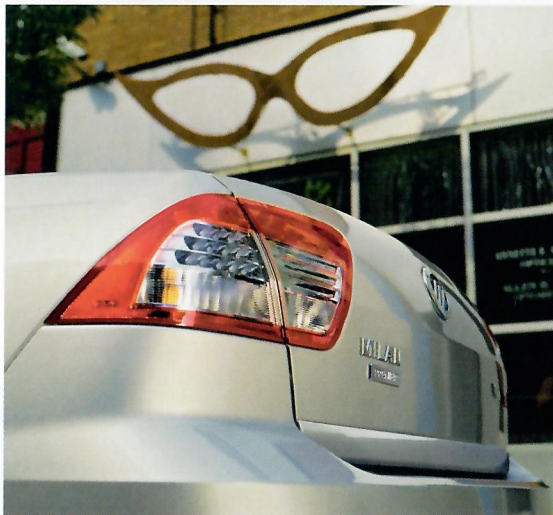


MILAN: FRESH 16



Miles of style.

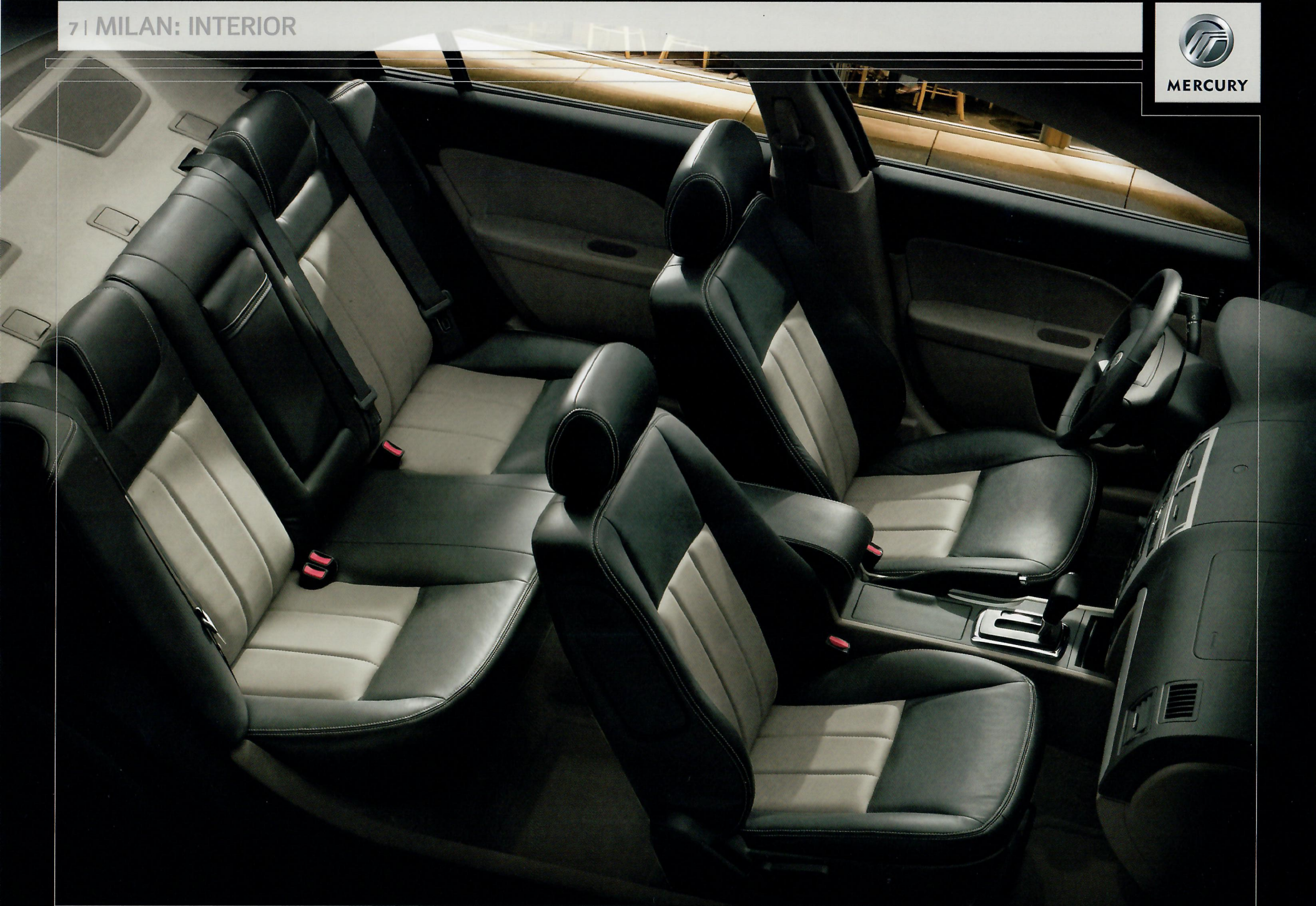
A SCULPTED BADGE, A SPLASH OF CHROME, AND GLISTENING HEADLAMPS THAT PIERCE THE NIGHT: COOL DESIGN AND BRILLIANT TECHNOLOGY JOIN FORCES TO CHARM AND IMPRESS. (CLOCKWISE FROM UPPER LEFT) HEADLAMPS CONTAIN PROJECTOR-BEAM AND POLISHED REFLECTOR ELEMENTS; LOWER FOG LAMPS COME WITH THE PREMIER COMFORT PACKAGE. THE RICH HEARTBEAT OF MILAN'S POTENT V-6 PULSES THROUGH DUAL CHROMED-TIPPED EXHAUSTS. BRIGHT SATIN-ALUMINUM ACCENTS SCORE FASHION POINTS. WITH ITS BOLD LOOKS AND A REFINED PRESENCE, MILAN IS AN ENVIABLE BALANCE OF FLASH AND CLASS.



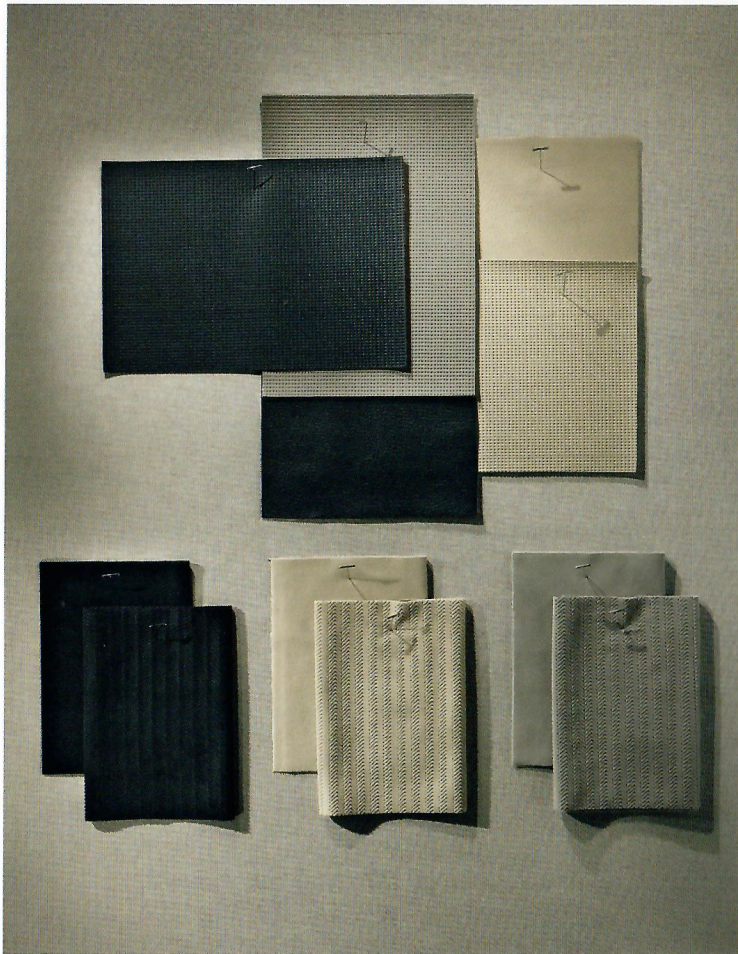
71 MILAN: INTERIOR



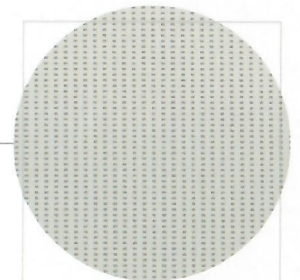
MERCURY



DARK CHARCOAL/MEDIUM LIGHT STONE TWO-TONE LEATHER TRIM: MILAN PREMIER WITH AVAILABLE EQUIPMENT



WALES MAHOGANY TRIM



SATIN-ALUMINUM TRIM

Wear it well.

WHETHER IT'S YOUR CLOTHES, YOUR MUSIC OR YOUR HOME, YOU SURROUND YOURSELF WITH A PERSONAL STYLE. MILAN APPEALS TO YOUR TASTES WITH A RANGE OF COLORS, TEXTURES AND MATERIALS. PREMIUM CLOTH SEATING SURFACES (LEFT) ARE STANDARD. LUXURIOUS LEATHER SEATING SURFACES WITH CONTRASTING STITCHING GRACE PREMIER MODELS. OPTIONAL IN PREMIER, WALES MAHOGANY WOOD APPEARANCE (TOP RIGHT) IS A CLASSIC LOOK. DOOR PANELS AND DASH ARE FINISHED IN SUPPLE COMPOSITES. STANDARD IN ALL MODELS, SATIN-ALUMINUM TRIM (BOTTOM RIGHT) SETS A COOL TONE. SELECT A DRAMATIC TWO-TONE EFFECT WITH LIGHT INSERTS BETWEEN DARK BOLSTERS AND LIGHT CONTRASTING STITCHING (SEE REVERSE), AVAILABLE IN PREMIER. CREATE AN ENVIRONMENT WHERE DRIVING IS AS PLEASURABLE AS YOUR OTHER PURSUITS. MILAN MAKES IT POSSIBLE.



MERCURY



DARK CHARCOAL/MEDIUM LIGHT STONE TWO-TONE LEATHER TRIM: MILAN PREMIER WITH AVAILABLE EQUIPMENT



Your life fits here.

SETTLE IN, LOOK AROUND, AND YOU'LL SOON DISCOVER THAT MILAN IS MADE TO ACCOMMODATE YOU IN STYLE. IT HAS LOTS OF ROOM TO CARRY YOUR STUFF – AND IT LOOKS GOOD DOING IT. (CLOCKWISE FROM UPPER LEFT) A CONVENIENT COVERED STORAGE COMPARTMENT ON TOP OF THE DASH KEEPS YOUR MP3 PLAYER AND WALLET HANDY. THE SOFT-TOUCH STEERING WHEEL FEATURES STANDARD FINGERTIP AUDIO AND SPEED CONTROLS. THE STANDARD 60/40 SPLIT FOLD-DOWN REAR SEAT IS SPRING-ASSISTED FOR EASY OPERATION. THE FRONT CONSOLE HAS TWO-TIERED STORAGE AND DOUBLES AS AN ARMREST. IN MILAN, THOUGHTFUL, PRACTICAL TOUCHES ARE STANDARD EQUIPMENT, AND YOU'LL FIND THEM JUST ABOUT EVERYWHERE YOU LOOK.



11 | MILAN: ALL THE TOYS



MERCURY

YOU DESERVE IT

A lot of time and talent have been put toward making Milan more than mere transportation. It's your personal comfort zone, filled with amenities that are both convenient and stylish.

Make yourself at home by adjusting the standard 6-way power driver's seat and the manual tilt/telescoping steering column. Your front passenger is treated to a 4-way manually adjustable seat. The rear doors have been stretched toward the back of the car, so access to the spacious rear seat is easy and comfortable.

Look up and check out the standard overhead console with its integrated sunglasses compartment. If you've chosen the available power moonroof, you'll find that it opens and closes with a single touch.

Return your attention to the steering wheel, and you'll find it has standard audio and speed controls, allowing you to keep your hands on the wheel. The instrument cluster includes an electronic message center that can advise you if a door isn't fully closed, or tell you how many miles until your next fill-up.

Milan's innovative storage solutions include a dash-top storage bin and two-tiered storage in the center console. You'll also find 6 cupholders throughout the cabin, including front cupholders that have a distinctive, finished look when their flip-top cover is closed.

The keys to a great driving environment are the special touches and attention to detail. These amenities contribute to the practical enjoyment of Milan while also showing a sense of quality, style and design.



OVERHEAD CONSOLE



STEERING WHEEL CONTROLS



2ND-ROW PASSENGER COMFORT



AVAILABLE HEATED SEATS



ELECTRONIC MESSAGE CENTER

SPECIAL MILAN PACKAGES

COMFORT PACKAGE:

AVAILABLE ON PREMIER

LEATHER-WRAPPED STEERING WHEEL WITH SPEED, AUDIO AND CLIMATE CONTROLS
ELECTRONIC AUTOMATIC TEMPERATURE CONTROL
FOG LAMPS AND AUTOMATIC HEADLAMPS
AUTO-DIMMING REARVIEW MIRROR
HEATED SIDEVIEW MIRRORS WITH SECURITY APPROACH LAMPS

WALES MAHOGANY APPEARANCE PACKAGE:

AVAILABLE ON PREMIER

WALES MAHOGANY APPEARANCE INSTRUMENT PANEL AND CENTER PANEL ACCENTS

SAFETY AND SECURITY PACKAGE:

AVAILABLE ON ALL MODELS

1ST- AND 2ND-ROW SIDE-CURTAIN AIRBAGS
DRIVER AND PASSENGER FRONT-SEAT SIDE AIRBAGS
PERIMETER ANTI-THEFT SYSTEM

12 | MILAN: ACOUSTICS



MERCURY

LISTEN HERE

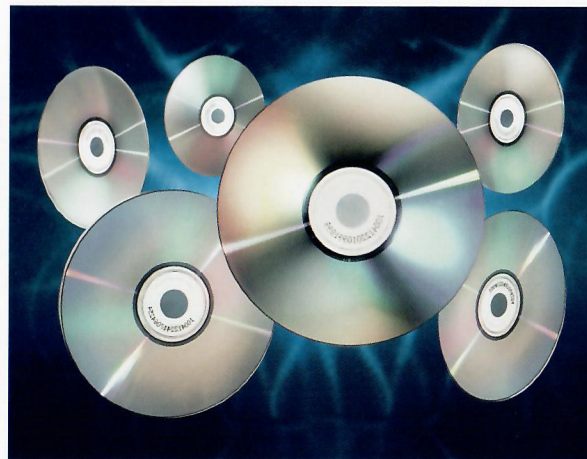
Whether your passion is hip-hop or jazz, alternative or rock, you shouldn't have to go anywhere without your favorite music. That's why Milan is the only car in its class with a standard MP3-capable audio system.

Both the I-4 and V-6 Milan carry a standard AM/FM stereo receiver and single-CD player with MP3 capability. This system is also equipped with 6 speakers for powerful, accurate, full-range digital sound.

Milan Premier comes with a Premium AM/FM stereo receiver and 6-disc in-dash CD changer with MP3 capability. This system also includes a 6-speaker array for rich, detailed playback.

For the ultimate in automotive sound, order up the Audiophile® Sound System. Its AM/FM stereo receiver powers a 6-disc in-dash CD changer with MP3 capability and 8-speaker array, including 2 subwoofers.

For total convenience, every Milan has a secondary set of audio controls on the steering wheel. Outstanding sound at your fingertips is just one more feature that makes Milan that much more pleasurable.



AUDIOPHILE SOUND SYSTEM

6-DISC IN-DASH CD

SECONDARY AUDIO CONTROLS



x 6 OR x 8 + MP3

STANDARD

AM/FM STEREO
SINGLE-CD
MP3 CAPABILITY
6 SPEAKERS

PREMIUM

AM/FM STEREO
6-DISC IN-DASH CD
MP3 CAPABILITY
6 SPEAKERS

AUDIOPHILE

AM/FM STEREO
6-DISC IN-DASH CD
MP3 CAPABILITY
8 SPEAKERS

13 | MILAN: I-4 PERFORMANCE



MERCURY

If you appreciate power and acceleration, yet expect responsible fuel economy along with refined performance, I-4 Milan is your soul mate. Its 2.3L Duratec 23 4-cylinder engine produces 160 hp and 156 lb.-ft. of torque. This sophisticated powerplant boasts a long list of technologies designed to boost efficiency without sacrificing power.

And the engine is as smooth as it is smart, with quick response and a throaty purr. The Duratec 23 I-4 with automatic transmission achieves Partial Zero Emissions Vehicle (PZEV) status.* All this adds up to a car that really moves you, is easy on the environment, and spends less time at the pump.



5-SPEED MANUAL TRANSMISSION

For spirited driving pleasure, you can't beat this combination. A smooth-shifting 5-speed gets the best out of the Duratec 23, giving you the right ratios to deliver maximum horsepower and torque. And with overdrive in the 2 top gears, you can get outstanding fuel economy too.

5-SPEED AUTOMATIC TRANSMISSION

The extra gear in our 5-speed automatic ups the ante for competing 4-cylinder sedans that offer only 4 speeds. Another gear enables tighter shifts for excellent acceleration, and gives this transmission 2 overdrive gears for great fuel economy. All that from 1 more gear.

*Standard on I-4 Milan and I-4 Premier in CA, MA, ME, NY and VT.

14 | MILAN: V-6 PERFORMANCE



MERCURY

Admit it: you're attracted to power. That makes V-6 Milan very attractive indeed. Its 3.0L Duratec 30 V-6 produces 221 hp and 205 lb.-ft. of torque, and it's teamed with a standard 6-speed automatic – the only one you can get in this class. Tuned for responsive power, the Duratec 30 answers quickly whether you're accelerating from a stop or passing slower

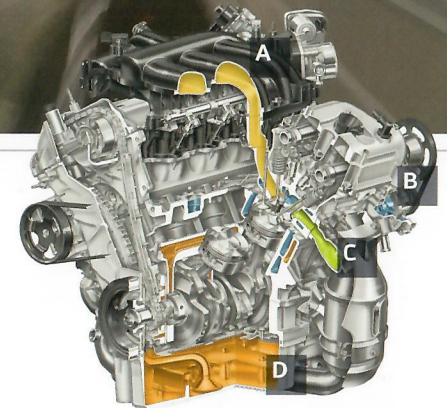
traffic. Designed for a long, reliable life and low maintenance, this V-6 isn't due for its first tune-up until 150,000 miles.* And it's easy being green: the Duratec 30 meets ULEV II standards for tailpipe emissions. Speaking of tailpipes, V-6 Milan and V-6 Premier have cool, chromed-tipped dual exhausts that optimize performance and play a very sophisticated tune.



6-SPEED AUTOMATIC TRANSMISSION

V-6 Milan brings you the advanced performance and silky operation of a 6-speed automatic, a feature once reserved for world-class luxury sedans. Its benefits are readily apparent. Close-ratio shifts get you quickly up to speed, and they're as smooth as you've ever felt. Plus, 2 overdrive gears promote exceptional efficiency, delivering V-6 power and performance with fuel economy you might expect from a 4-cylinder.

- [A] INTAKE AIR PASSAGES (yellow)
- [B] COOLANT PASSAGES (blue)
- [C] EXHAUST GAS PASSAGE (green)
- [D] OIL PASSAGE (orange)



*Under normal driving conditions with routine fluid and filter changes.

mercuryvehicles.com



MERCURY

A SKILLFUL PLAYER

Milan is definitely a driver's car, with the performance, handling and ride normally associated with a sports sedan. Its energetic character is as well-suited to busy metropolitan streets as it is to winding 2-lane blacktops.

An advanced Short- and Long-Arm (SLA) front suspension, plus a multi-link independent rear suspension, are tuned for the agility required to negotiate rush-hour traffic and the compliance needed to smooth out ragged city streets. Mated to Milan's stable chassis, the suspension also delivers exceptional open-road handling.

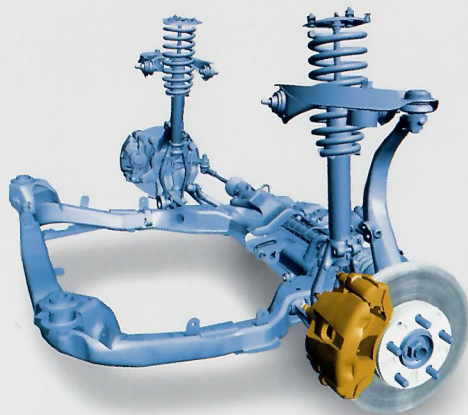
You'll discover Milan's playful side the first time you take on a twisting back road. Dive deep into a corner, and Milan responds with balance and control, making effortless transitions from entry to exit, and holding a firm line throughout the turn. It's a true pleasure to have such sure command of the road.

Also contributing to Milan's impressive driving dynamics are 16" wheels with 60-series all-season tires, standard on Milan, and 17" wheels with 50-series high-performance tires, standard on Premier.

Yet for all its athletic prowess, Milan provides a smooth, comfortable ride whenever you just want to settle back and get where you're going. Extensive work on eliminating noise, vibration and harshness means that you'll hear just the right amount of the road beneath you, and the rush of wind at expressway speeds is a subtle presence. These elements combine to keep you in touch with the road.

All aspects of the vehicle work together, which makes the driving experience so engaging. Milan inspires confidence and enjoyment, especially when you're behind the wheel.

AN ADVANCED DESIGN THAT MAKES
NO COMPROMISES, DELIVERING
TAUT HANDLING AND A SMOOTH RIDE



SHORT- AND LONG-ARM FRONT SUSPENSION

MILAN'S COMPACT REAR SUSPENSION LAYOUT
OPENS UP TRUNK SPACE WHILE MAINTAINING
RIDE AND HANDLING QUALITY



MULTI-LINK INDEPENDENT REAR SUSPENSION



MERCURY

FRONT-WHEEL DRIVE

From snow-covered city streets to rain-soaked highways, Milan's front-wheel drive design is engineered to give you confident control. Front-wheel drive delivers excellent traction in most kinds of weather and driving conditions because the weight of the engine sits over the drive wheels to help them maintain contact with the road.

4-WHEEL DISC BRAKES

Braking performance also plays a major role in Milan's solid reflexes. An advanced 4-wheel disc brake system delivers ample feedback as well as controlled, predictable braking action. Ventilated front rotors and solid rear discs provide a large brake-swept area to quickly bring Milan down from speed.



ANTI-LOCK BRAKE SYSTEM (ABS)

For added confidence, ABS is available on Milan and standard on Milan Premier. During hard braking, wheel lockup can compromise steering control. ABS helps prevent wheel lockup, automatically stepping in to help improve steering control in a wide variety of road and weather conditions.

TRACTION ASSIST

An engine-controlled Traction Assist system constantly monitors wheel slip and can help restore or maintain traction. The system automatically steps in whenever it's needed to help prevent wheel spin on slippery surfaces. Available on V-6 models.



MERCURY

THE STRUCTURAL EDGE

Mercury safety engineers have developed Milan's body structure to help direct crash energy away from the passenger compartment, and have incorporated energy-absorbing materials to help protect the vehicle's occupants in the event of a collision.

Milan's impact-protection elements include front and rear crumple zones made of steel and advanced polycarbonates. Side-intrusion beams anchored inside each door, plus thick steel in the B-pillar structures (nearly 1/4-inch of steel), help manage intrusion into

the cabin in side impacts. Interior surfaces are covered in soft composites, and energy-absorbing foam blocks are sandwiched between the door frames and the interior door panels. Trim parts inside the vehicle are designed to "give" to reduce the potential for injury.

Milan's structure uses advanced high-strength steel and energy-absorbing materials to control and disperse impact energy. This approach optimizes the structure and helps insulate occupants from the full force of an impact.

This architecture is designed to handle the complex forces that are involved in real-world crashes. Mercury has engineered a high level of safety performance into the 2006 Milan, something you can count on whenever you take to the road.



FRONT AND REAR RAILS

DEFORM PROGRESSIVELY
TO HELP ABSORB IMPACT

ADVANCED, DUAL-PHASE STEEL ROCKER PANELS

CHANNEL CRASH ENERGY AWAY FROM OCCUPANTS

TAILOR-WELDED B-PILLARS

HIGHER-GRADE STEEL IN UPPER SECTION TO PROTECT OCCUPANTS, LOWER-TENSILE-STRENGTH STEEL IN BOTTOM TO HELP ABSORB AND MANAGE THE FORCE OF A SIDE IMPACT



MERCURY

PROVEN TECHNOLOGY SURROUNDS YOU

Mercury Milan has an impressive array of occupant protection systems designed to help keep you and your passengers safe.

While safety belts might seem ordinary, they're central to the effectiveness of every other occupant-protection system. That's why the Belt-Minder® safety belt chime will remind you to buckle up.

Rear-seat lower anchors and tether anchors for child-safety seats (LATCH) help provide proper seat

installation. The Personal Safety System® coordinates safety belt and front-airbag management to enhance front-occupant protection in certain frontal collisions.

Front-seat side airbags are bundled in the Safety Package that also includes side-curtain airbags that provide enhanced head protection for both 1st- and 2nd-row outboard occupants.

For security and convenience, an integrated key fob operates the door locks, trunk lid and panic alarm. At

night or in any dark area, available security approach lamps illuminate the area around the front doors.

The standard SecuriLock® passive anti-theft system helps prevent the engine from being started unless a coded key programmed to your vehicle is used.

Milan brings you some of the most advanced security and safety systems available. They're always on guard, quietly providing convenience and protection for you and your passengers at every turn.



Always wear your safety belt and secure children in the rear seat.

mercuryvehicles.com

19 | MILAN: MODEL PORTFOLIO

Each model includes the standard equipment of the previous model, except where additions/exceptions are noted.



MERCURY

I-4 MILAN

POWERTRAIN/FUNCTIONALITY

2.3L Duratec 23 I-4 engine
5-speed manual transmission
16" 7-spoke deluxe steel wheel covers
150,000-mile tune-up interval*
Front (24-mm) and rear (16-mm) stabilizer bars
Front-wheel drive
Independent Short- and Long-Arm (SLA) front suspension
Multi-link independent rear suspension
P205/60R16 all-season tires
Power 4-wheel disc brakes
Power rack-and-pinion steering
Single exhaust

EXTERIOR

Light-Emitting Diode (LED) taillamps
Power, heated body-color sideview mirrors
Rear-window defroster
Solar-tinted glass
Variable-interval windshield wipers

INTERIOR

6-way power driver's seat with manual lumbar
4-way manual front-passenger's seat
5-passenger seating
Accessory delay
Air conditioning
AM/FM stereo/single-CD player with MP3 capability
Analog clock
Carpeted front and rear floor mats
Cupholders (6)
Dash-top storage bin
Full center console with armrest and two-tiered storage
Grocery bag hooks in trunk
Message center
Overhead console
Power door locks with child-safety rear door locks
Power points (2)
Power remote trunk release
Power windows with one-touch-down driver's-side feature
Satin-aluminum interior accents
Split-fold 60/40 spring-assisted rear seat
Steering wheel-mounted speed and audio controls
Tilt/telescopic steering column

I-4 MILAN (continued)

SECURITY/SAFETY

3-point safety belts for all seating positions
Battery saver
Belt-Minder® safety belt reminder
Illuminated entry
Lower anchors and tether anchors for child-safety seats (LATCH)
Remote keyless-entry system with integrated key fob
Personal Safety System® with dual-stage driver and front-passenger airbags,** front safety belt pretensioners, energy-management retractors, front safety belt usage sensors, driver's-seat position sensor, crash severity sensor, and Front-Passenger Sensing System
SecuriLock® passive anti-theft system
Side-intrusion door beams

OPTIONS

5-speed automatic transmission
16" 9-spoke aluminum wheels
Premium AM/FM stereo/6-disc in-dash CD changer with MP3 capability
Audiophile® Sound System with AM/FM stereo/6-disc in-dash CD changer with MP3 capability
Anti-lock brakes
Power moonroof
Safety and Security Package – Perimeter anti-theft alarm, side-curtain airbags and front-seat side airbags

V-6 MILAN

POWERTRAIN/FUNCTIONALITY

3.0L Duratec 30 V-6 engine
6-speed automatic transmission
16" 9-spoke aluminum wheels
Front (24-mm) and rear (17-mm) stabilizer bars
Dual exhaust with chromed tips

OPTIONS

Premium AM/FM stereo/6-disc in-dash CD changer with MP3 capability
Audiophile Sound System with AM/FM stereo/6-disc in-dash CD changer with MP3 capability
Anti-lock brakes
Power moonroof
Traction Assist (requires ABS)
Safety and Security Package – Perimeter anti-theft alarm, side-curtain airbags and front-seat side airbags

I-4 PREMIER

POWERTRAIN/FUNCTIONALITY

2.3L Duratec 23 I-4 engine
5-speed manual transmission
17" 14-spoke machined-aluminum wheels
Anti-lock Brake System (ABS)
P225/50VR17 all-season tires
Single exhaust

INTERIOR

Leather-trimmed seats
Premium AM/FM stereo/6-disc in-dash CD changer with MP3 capability

OPTIONS

5-speed automatic transmission
Audiophile Sound System with AM/FM stereo/6-disc in-dash CD changer with MP3 capability
Comfort Package – Electronic Automatic Temperature Control; automatic headlamps; leather-wrapped steering wheel with speed, audio and climate controls; auto-dimming rearview mirror with compass; fog lamps and security approach lamps
Heated front seats (requires Comfort Package)
Power moonroof
Safety and Security Package – Perimeter anti-theft alarm, side-curtain airbags and front-seat side airbags
Wales Mahogany Wood Appearance Package – Instrument panel and center panel accents

V-6 PREMIER

POWERTRAIN/FUNCTIONALITY

3.0L Duratec 30 V-6 engine
6-speed automatic transmission
Front (24-mm) and rear (17-mm) stabilizer bars
Dual exhaust with chromed tips

OPTIONS

Audiophile Sound System with AM/FM stereo/6-disc in-dash CD changer with MP3 capability
Comfort Package – Electronic Automatic Temperature Control; automatic headlamps; leather-wrapped steering wheel with speed, audio and climate controls; auto-dimming rearview mirror with compass; fog lamps and security approach lamps
Heated front seats (requires Comfort Package)
Power moonroof
Traction Assist (requires ABS)
Safety and Security Package – Perimeter anti-theft alarm, side-curtain airbags and front-seat side airbags
Wales Mahogany Wood Appearance Package – Instrument panel and center panel accents



WHEELS



16" 7-SPOKE DELUXE STEEL WHEEL COVERS
Standard on I-4 Milan



16" 9-SPOKE ALUMINUM
Standard on V-6 Milan; optional on I-4 Milan



17" 14-SPOKE MACHINED-ALUMINUM
Standard on I-4 Premier and V-6 Premier

COLOR PALETTE COMBINATIONS

EXTERIOR PAINT COLORS

- Oxford White
- Vivid Red
- Light Tundra
- Dark Blue Pearl
- Dune Pearl
- Charcoal Beige
- Silver Frost
- Satellite Silver
- Tungsten Grey
- Black

INTERIOR COLORS AVAILABLE WITH ALL EXTERIOR PAINT COLORS UNLESS NOTED

MILAN – CLOTH SEAT TRIM

NOT AVAILABLE WITH THE FOLLOWING EXTERIOR PAINT COLORS

Camel	Silver Frost, Satellite Silver, Tungsten Grey
Dark Charcoal	
Medium Light Stone	Dune Pearl
PREMIER – LEATHER SEAT TRIM	
Camel	Silver Frost, Satellite Silver, Tungsten Grey
Dark Charcoal	
Dark Charcoal/Medium Light Stone Two-Tone	Dune Pearl

INTERIOR APPEARANCE ACCENTS

Satin-Aluminum	Standard on all models
Wales Mahogany	Available on I-4 Premier and V-6 Premier

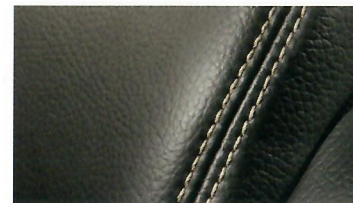
PLEASE REFERENCE ACCOMPANYING COLOR PALETTE TO VIEW EXTERIOR PAINT COLORS AND SEAT TRIM.

Mercury uses clearcoat paint for beauty and protection. All exterior colors are Metallic paint except for Oxford White and Black.

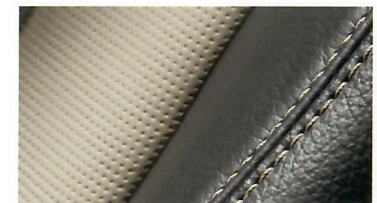
PREMIER LEATHER SEAT TRIM



CAMEL WITH DARK PARCHMENT
CONTRASTING STITCHING



DARK CHARCOAL WITH LIGHT STONE
CONTRASTING STITCHING



DARK CHARCOAL/MEDIUM LIGHT STONE WITH
LIGHT STONE CONTRASTING STITCHING



DIMENSIONS

	I-4 MANUAL	V-6 AUTOMATIC
Engine	2.3L Duratec 23 DOHC 16-Valve	3.0L Duratec 30 24-Valve
Horsepower @ rpm	160 @ 6250	221 @ 6250
Torque: lb.-ft. @ rpm	156 @ 4250	205 @ 4800
Transmission	5-speed manual	6-speed automatic
Compression ratio	9.7:1	9.86:1
Curb weight (lbs.)	3117	3303
Dimensions (in.) front/rear		
Head room	38.7/37.8	
Leg room (max.)	42.3/37.0	
Shoulder room	57.4/56.5	
Hip room	54.0/53.4	
Length	191.4	
Width (excl. mirrors)	72.2	
Height	57.2	
Wheelbase	107.4	
Track	61.6/61.3	
Cargo volume (cu. ft.)	15.8	
Seating capacity	5	
Fuel capacity	17.5 gallons	
EPA-estimated fuel economy (mpg) city/hwy.		
I-4 manual	23/31	
V-6 automatic	21/29	



RESOURCES AND SERVICES



Get the ride you want. Whether you plan to lease or finance, you'll find the choices that are right for you at Ford Credit. Ask your Lincoln Mercury Dealer for details or check us out at www.fordcredit.com.

FORD EXTENDED SERVICE PLAN

For a purchase or lease, the Ford Extended Service Plan (ESP) gives you "Peace-of-Mind" protection designed to cover key vehicle components and protect you from the cost of unexpected repairs. Ask your Lincoln Mercury Dealer for an ESP backed by Ford Motor Company and honored at all Ford and Lincoln Mercury dealerships.

FORD MOTOR COMPANY INSURANCE SERVICES

Choose the insurance program that's designed for your vehicle – Ford Motor Company Insurance Services. Our program helps you receive the rates and service you deserve. Call (877) 367-3847 or visit us at www.fordvip.com for a no-obligation quote. Insurance offered by American Road Services Company (in CA, American Road Insurance Agency), a licensed agency and subsidiary of Ford Motor Company.

Comparisons based on 2005 competitive models (Medium Class with 100-103 cu. ft. passenger volume), publicly available information and Ford certification data at time of printing. Following the publication of this brochure, certain changes in standard equipment, options, prices and the like, or product delays may have occurred which would not be included in these pages. Your Lincoln Mercury Dealer is your best source for up-to-date information. Lincoln Mercury reserves the right to change product specifications at any time without incurring obligations. Options shown or described in this brochure are available at extra cost and may be offered only in combination with other options or subject to additional ordering requirements or limitations.

For a personal demonstration of Milan or other 2006 Mercury vehicles, visit your Lincoln Mercury Dealer today. Ask about the Mercury Commitment,[®] a comprehensive benefits package for all new Mercury owners.

ALL-NEW 06 MERCURY MILAN



BIG BOWL



MERCURY | NEW DOORS OPENED

mercuryvehicles.com

The New Site For Car Brochures

DEZO'S GARAGE

©2005 Lincoln Mercury, Ford Motor Company 06MMLCAT VOL. 1

COLOR PALETTE

Please reference the Specifications card of your Mercury vehicle for the availability of specific Color Palette Combinations.



MERCURY | NEW DOORS OPENED

mercuryvehicles.com

MERCURY BRAND EXTERIOR PAINT COLORS



VIBRANT WHITE



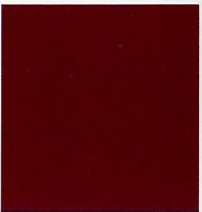
OXFORD WHITE



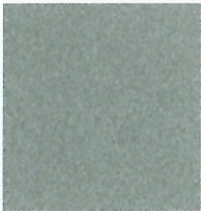
VIVID RED



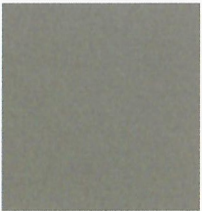
MERLOT



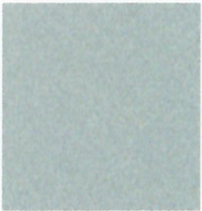
DARK TOREADOR RED



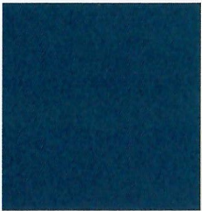
LIGHT TUNDRA



SPRUCE GREEN



LIGHT ICE BLUE



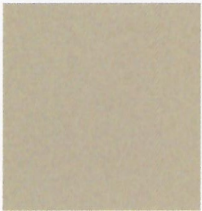
NORSEA BLUE



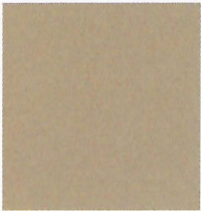
DARK BLUE PEARL



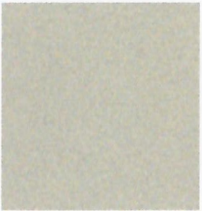
CASHMERE TRI-COAT



SMOKESTONE



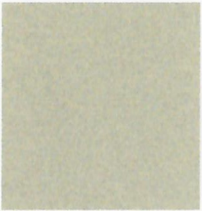
DUNE PEARL



LIGHT FRENCH SILK



ARIZONA BEIGE



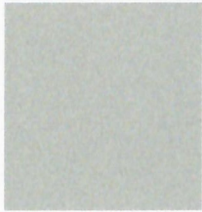
GOLD ASH



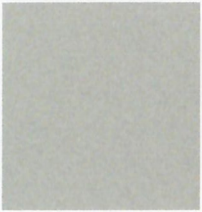
CHARCOAL BEIGE



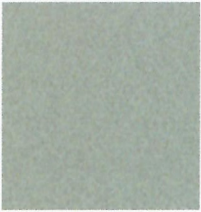
SILVER



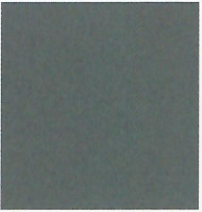
SILVER FROST



SILVER BIRCH



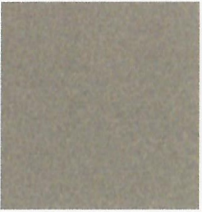
SATELLITE SILVER



TUNGSTEN GREY



DARK SHADOW GREY



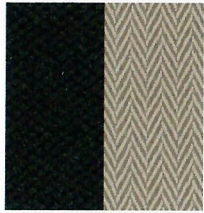
MINERAL GREY



BLACK

Lincoln Mercury reserves the right to change product specifications at any time without incurring obligations. Please see your Lincoln Mercury Dealer for actual paint/trim options. Mercury uses clearcoat paint for beauty and protection. All exterior paints are Metallic except for Vibrant White, Oxford White, Cashmere Tri-Coat and Black. Colors are representative only.

MERCURY BRAND CLOTH SEAT TRIM



BLACK/LIGHT
PARCHMENT
INSERTS



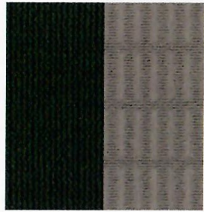
CAMEL



CAMEL/SAND
INSERTS



CHARCOAL/MEDIUM
FLINT TWO-TONE



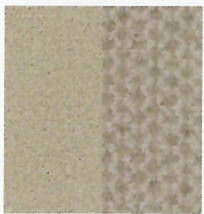
CHARCOAL BLACK/
MEDIUM LIGHT
STONE
INSERTS



CHARCOAL BLACK
TWO-TONE



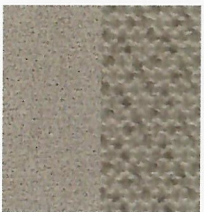
DARK CHARCOAL



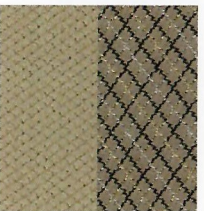
LIGHT CAMEL
TWO-TONE



MEDIUM LIGHT
STONE



MEDIUM LIGHT
STONE
TWO-TONE



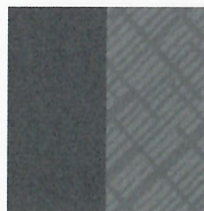
PEBBLE



PEBBLE/LIGHT
PARCHMENT
INSERTS

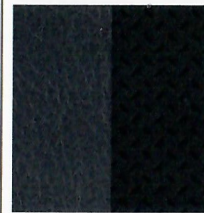


PEBBLE TWO-TONE



SHALE TWO-TONE

MERCURY BRAND LEATHER SEAT TRIM



BLACK WITH DIAMOND
PLATE
INSERTS



BLACK/LIGHT
PARCHMENT
PREFERRED SUEDE®
INSERTS



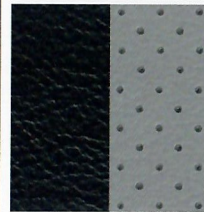
CAMEL



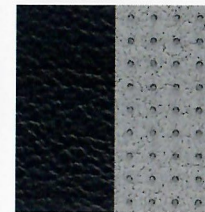
CAMEL WITH
PERFORATED
INSERTS



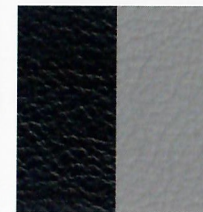
CAMEL/SAND
EMBOSSED
PREFERRED SUEDE
INSERTS



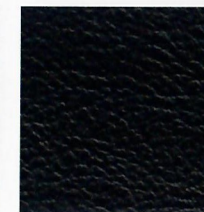
CHARCOAL/LIGHT
FLINT
PERFORATED
INSERTS



CHARCOAL/LIGHT
FLINT
PREFERRED SUEDE
INSERTS



CHARCOAL/LIGHT
FLINT
TWO-TONE



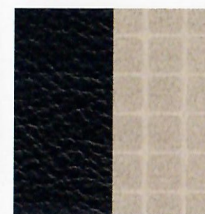
CHARCOAL BLACK



CHARCOAL BLACK
WITH
PERFORATED
INSERTS



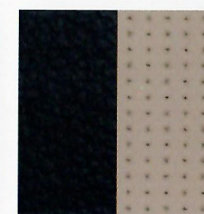
CHARCOAL BLACK
WITH
MINI-PERFORATED
INSERTS



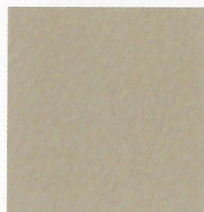
CHARCOAL BLACK/SAND
EMBOSSED PREFERRED
SUEDE INSERTS



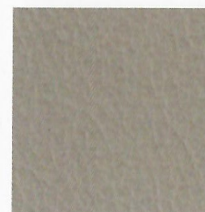
DARK CHARCOAL



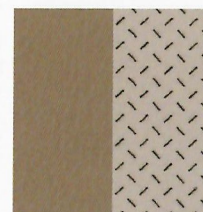
DARK CHARCOAL/
MEDIUM LIGHT
STONE
TWO-TONE



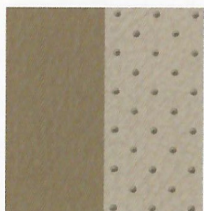
LIGHT CAMEL



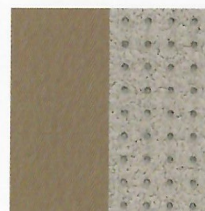
MEDIUM LIGHT
STONE



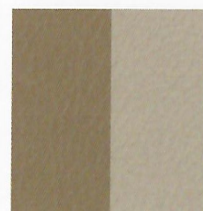
PEBBLE/LIGHT
PARCHMENT
DIAMOND PLATE
INSERTS



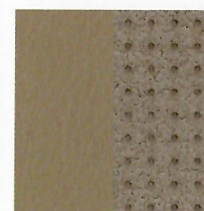
PEBBLE/LIGHT
PARCHMENT
PERFORATED
INSERTS



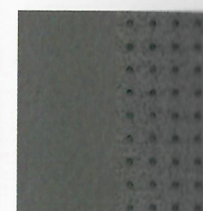
PEBBLE/LIGHT
PARCHMENT
PREFERRED SUEDE
INSERTS



PEBBLE/LIGHT
PARCHMENT
TWO-TONE



PEBBLE TWO-TONE
WITH MINI-PERFORATED
INSERTS



SHALE TWO-TONE
WITH MINI-PERFORATED
INSERTS